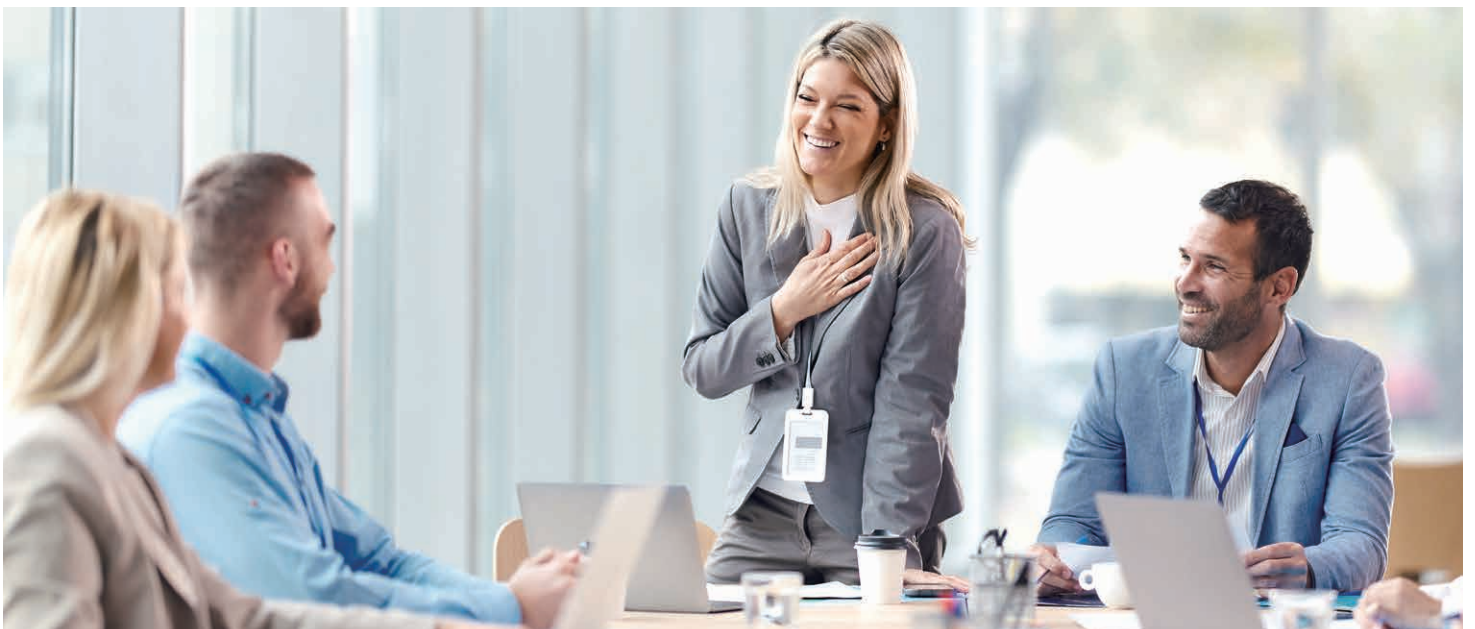




A3 Colour Multifunction Printer  
Apeos C2561 / C2061

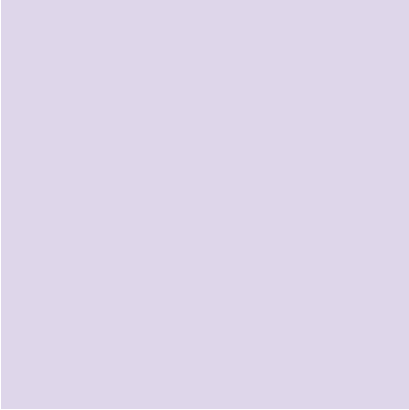
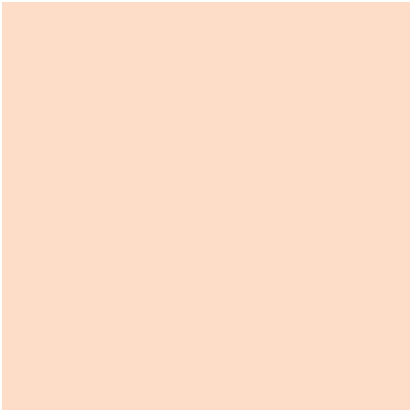


\* The model in the photo is Model-CPS-B with optional 3 Tray Module.



# Embark on your digital transformation journey

Designed to accelerate your digital transformation (DX) journey, new Apeos series with its smart and seamless integration features present itself as a trusted digital partner.



# True scalable solutions to start your digital journey



## Apeos C2561 / C2061

### Offering Scalability

Promote easier collaboration and enhanced accessibility with paperless office solutions.

### Designing Simplicity

Designed for all, our devices deliver ease of use, accessibility and personalisation features for a true intuitive experience.

### Creating Environmental Sensitivity

Driving organisation awareness towards creating a low impact environment with advance features such as low melting point (low energy) toner technology, smart power-saving sensors or staple-free finishing.

Apeos C2561

Colour/Monochrome

25 ppm\*

Apeos C2061

Colour/Monochrome

20 ppm\*

\* A4 LEF



# Designing simplicity for everyday business needs

## Small footprint fits in every office space

The compact design with width of 577 mm and depth of 659 mm\* fits everywhere, including tight spaces, maximising office space utilisation.

\* For 1 Tray standard configuration.

## Produce promotional materials in-house and on-demand

Supports wide range of paper size and weight\*<sup>1</sup>, giving you the flexibility to personalise and print on envelope, direct mail, posters, promotional banners, or even long POP displays\*<sup>2</sup>.

\*1: Paper weight from 52 to 300 gsm  
\*2: Long sheets up to 297 x 1,200 mm



## Make an impression with every print

Newly developed toner produces exceptional colours in every tone and shade, while high resolution of 1,200 x 2,400 dpi delivers precise lines and text, giving every print a professional look.



## Easy-to-use, 7-inch control panel

### Effortless and intuitive operation at the touch of your finger

The home screen allows individual user to customise frequently used app buttons and arrangement based on individual preference. Frequently used settings can be "pinned" for easy access on daily basis.

Additionally, you can connect your mobile devices through QR code scanning or NFC to Copy, Fax\*<sup>1</sup>, Print and Scan\*<sup>2</sup> jobs using the Print Utility\*<sup>3</sup> application.

\*1: Optional  
\*2: Scan to Mobile, E-mail, Scan to Folder.  
\*3: Connect to the machine via wireless environment or Wi-Fi Direct connection. It can be downloaded free of charge from Google Play™ or App Store.  
Note: AirPrint, Mopria® Print Service, and Mopria Scan are supported for printing or scanning by using a mobile device.



## Finishing solutions that scale with business needs (Optional)

### Exit 2 Tray, Side Tray

Supports output from three locations for Copy, Fax, and Print functions. This way, important received faxes are not missed, and output paper can be quickly retrieved.



### Finisher-A3 + Side Tray



•Staple

3 Way output

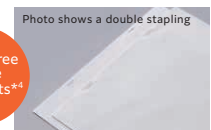
Quiet design

### Finisher-B4 / B5 + Booklet Maker Unit + Side Tray



•Staple  
•Staple-free Staple\*<sup>1</sup>  
•Punch\*<sup>2</sup>  
•Saddle Staple\*<sup>3</sup>  
•Single Fold\*<sup>3</sup>

Supports single and double Staple-free Stapling\*<sup>4</sup>



Staple-free Staple 10 Sheets\*<sup>4</sup>

\*1: Staple-free stapling is available with Finisher-B5. \*2: Optional \*3: Booklet Maker Unit is required. When specifying Saddle Staple or Single Fold with Finisher-B4/B5, paper is not folded but creased. \*4: 80 gsm paper or less.

# Promotes DX and collaboration with paperless office solutions

## Quick digitisation of high-volume originals

### 1 pass, 2-sided scanning of up to 80 ppm

The high-speed 1-pass, 2-sided scanning Automatic Document Feeder holds up to 130 sheets\* and scans 2-sided document in one go, allowing you to digitise large documents swiftly and effortlessly.

Note: Installed for Model-CPS-B as standard.  
\* 70 gsm



The large grip width makes it easier to lift the automatic document feeder.

- Supports scanning of small-size documents (49 x 85 mm), thick cheques and thin paper receipts (38 to 128 gsm).
- Scanned documents can be transferred to e-mail, PC, or shared servers.
- Supports multi-sending, such as saving a copy to your PC while sending an e-mail to a client in a single scan.

## Streamline operations with paperless fax\*

### Preview before print to reduce wastage

Content of received fax can be previewed on the control panel before printing, allowing you to delete unwanted documents such as unsolicited faxes and print only what is necessary to avoid paper wastage.

### Don't miss important faxes, whether you are in the office or on the move

Faxes received can also be forwarded by e-mail, allowing you to check the content even when you are away from office.

\* Optional



### Automate the tedious task of fax sorting with Paperless Fax Delivery\*

By using Paperless Fax Delivery\*, faxed documents can be automatically sorted and forwarded without printing. Manual sorting and organising of received documents are eliminated as they are automatically sorted into folders based on information such as fax number, received date and preregistered names in multifunction printer's address book.

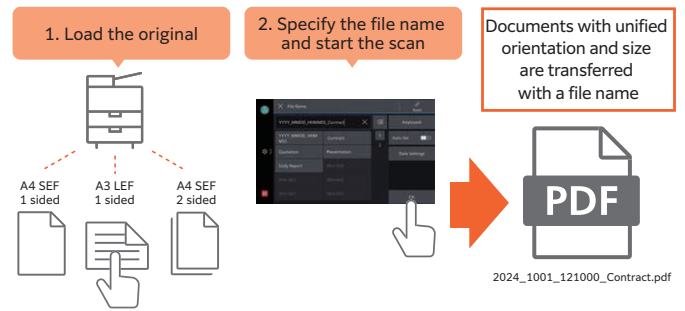
\*Optional

## Simple scanning to yourself

With ScanAuto, the pre-installed multifunction printer add-on application, you can easily send scanned data with a touch of a button and the multifunction printer will automatically select scan settings (such as document orientation, 1-sided or 2-sided) that are suitable for the document.

File names can be assigned from presets on the UI screen, ensuring scanned files will not get lost on the PC.

Note: The destination can be selected from Scan (Email) or Scan (to PC)



## Digitisation of paper documents for effortless document management

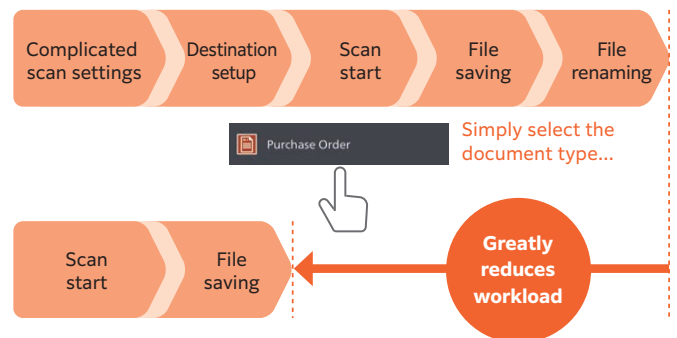
Scan Delivery Light\* reduces your scanning workload by simplifying complicated and repetitive scanning workflow.

Standard rules and templates can be created easily, allowing you to complete multiple actions (scan settings, storage destination designation and file renaming) with a single touch.

Scanned information can also be managed and utilised centrally, improving productivity and resource optimisation.

\* Optional

### Scan Delivery Light



# Safeguarding your DX journey with market-leading security

As network connected information devices, the multifunction printer is equipped with state-of-the-art security features to protect your valuable information assets from cyber-attacks and rapidly evolving security threats.

## Protect from unauthorised user

- Unauthorised operations and access are prevented by user authentication and usage restrictions.
- Expansion with Secondary Ethernet\* allows a single multifunction printer to be used on a separated network, etc.

\* Optional

## Protects Data

- Encryption of communication paths with TLS and IPsec
- Protection of scanned files and e-mails through encryption/ electronic signatures
- Data writing to SSD is encrypted with robust AES-256 encryption, etc.

## Protect from unauthorised access

- Account lock function
- Restriction of accessible IP addresses
- Prevention of software tampering during multifunction printer startup and operation
- Automatic repair function upon detection of tampering at startup, etc.

## Prevent information leaks due to operational errors

- Fixing the delivery destination of scanned documents
- Double input of fax destinations, etc.

## The multifunction printers of the future

FUJIFILM Business Innovation aims to address environmental issues through climate change mitigation and resource circulation efforts in our business activities. Our products are developed with unique innovations and technologies that balances environmental impact reduction and usability.

### New toner and a fusing unit with low fixing temperature and high image quality

Adopted a new toner and a fusing unit that enable reducing power consumption during toner fixing, the most power-consuming process in multifunction printers.

By using functional resin, our newly developed toner has achieved industry-leading low fixing temperature\*<sup>1</sup> that is 15 degrees lower than the toner used in previous models\*<sup>2</sup>.

In addition, the adoption of a new fixing unit achieved both low fixing temperature and exceptional image quality.

\*1: As of July 2024, according to our survey.

\*2: Toner used in the Apeos C3060 / C2560 / C2060.

### Designed for now and for the future

In the effort to promote recycling of resources, recycled plastic materials are used\* for parts such as the front cover and trays. We have overcome challenges to devise ways to suppress uneven color of the appearance of recycled plastic, which is said to be difficult to mold. And by improving the strength and rigidity of the parts, we ensure the quality of the product.

Furthermore, our products have been redesigned to allow easy disassembly and cleaning, making them easy to reuse and recycle in the future.

\* In the case of 4 Tray configuration with Duplex Automatic Document Feeder. 15 % of the total plastic weight of the device is recycled material.

### Technologies for energy conservation

- Less energy and compact with high resolution printing on LED printhead.
- Saves energy with quick startup and smart power saving feature that solely powers on the required parts according to the functions being used by users.

### Contributing to smaller CO<sub>2</sub> emission with lightweight body

By optimising resin and sheet metal with thinning technology and revising the frame structure, we have achieved a reduction in body weight by 10 %\* while maintaining the strength and contributing to CO<sub>2</sub> emissions reduction in logistics.

\* For Model-CPS-ST with 4 Tray configuration. Compared to the previous model Apeos C3060 / C2560 / C2060 Model-CPS with 4 Tray configuration, including toner.

## Reliable support system

### Easy solutions to resolve problems

From supplies replacement to unexpected device failures, most problems can be resolved without waiting for the service representatives or sales representatives.

#### 1. Resolve problem using the "Help" function on the device

- Self Help information is available on the control panel
- Self Help information can be accessed via the mobile device by scanning the QR code displayed on the control panel

#### 2. "Remote Assistance" with the help of operators

- Connects directly to the Support Centre
- An operator will remotely access the multifunction device to resolve the problem by guiding through the steps on the shared control panel

### Keeping a close eye on your multifunction device on a daily basis

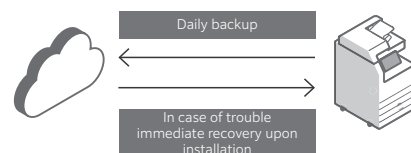
Connecting your multifunction printer to our EP service\* via the internet allows for checking of billing meter, automatic delivery of consumables when cartridges level is low, daily status monitoring, and machine error detection for early intervention to rectify problem. This minimises operation downtime and reduces administrator's burden.

Note: The content of the services provided may vary depending on the usage region. For details, please contact one of our sales representative.

\* You need to apply for using the EP service. (free of charge)

### Device Setup Editor

Device Setup Editor is a service that always backs up the latest setting information to a cloud server. It allows you to be prepared for unexpected situations and use your multifunction printer with confidence.



Note: You need to apply for using the Device Setup Editor. (free of charge).

### Set up and manage remote multifunction printers from the Remote Operation Panel

By launching the Remote Operation Panel from a web browser, the multifunction printer's control panel can be displayed to and operated from a PC. By logging into Administrator Mode, the system administrator can manage multifunction printers at remote business locations within the same intranet.

Note: Within the same intranet. While the Remote Operation Panel is active, the multifunction printer's control panel cannot be operated. Additionally, the Remote Operation Panel cannot be launched while the user is operating the multifunction printer.

# Apeos C2561 / C2061

## Functions & Specifications

### Basic Specifications / Copy Function

Item	C2561	C2061
Type	Desktop / Console	
Memory Capacity	4 GB (Max: 4 GB)	
Storage Device Capacity*1	Model-CPS-B: 256 GB Model-CPS-ST: 3.6 GB (Optional: 256 GB) *2	3.6 GB (Optional: 256 GB) *2
Colour Capability	Full Colour	
Scan Resolution	600 x 600 dpi	
Printing Resolution	1,200 x 2,400 dpi	
Warm-up Time*3	[Embedded Plug-ins / Custom Services] *4 When enabled: 26 seconds or less (23 degrees Celsius room temperature) When disabled: 22 seconds or less (23 degrees Celsius room temperature)	
Recovery Time (Recovery Time from Sleep Mode)	11.0 seconds or less (23 degrees Celsius room temperature)	
Original Size	Maximum of A3, 11 x 17", 297 x 432 mm for both Sheet and Book	
Paper Size	Tray 1	Max: A3, 11 x 17", Min: A5 SEF, Envelope*5, Postcard (100 x 148 mm) Custom Size: 90 x 98 mm to 297 x 432 mm
	Tray 2, 3, 4	Max: A3, 11 x 17", Min: A5 SEF Custom Size: 140 x 182 mm to 297 x 432 mm
	Bypass Tray	Max: A3, 11 x 17", Min: A5 SEF, Envelope*5, Postcard (100 x 148 mm) Custom Size: 89 x 98 mm to 297 x 432 mm
	Image loss width*7	Lead edge 4.0 mm, Trail edge 2.0 mm, Right / Left edge 2.0 mm
Paper Weight*8	Paper Tray	52 to 300 gsm
	Bypass Tray	52 to 300 gsm
First Copy	B/W*9 5.9 sec.	
Output Time	Colour*10 7.9 sec.	
	A4 LEF / JIS B5 LEF	B/W: 25 ppm Colour: 25 ppm
Continuous Copy Speed*11	A4	B/W: 19 ppm Colour: 19 ppm
	JIS B5	B/W: 14 ppm Colour: 14 ppm
	JIS B4	B/W: 16 ppm Colour: 16 ppm
	A3	B/W: 14 ppm Colour: 14 ppm
	Standard	520 sheets x 1-tray + Bypass Tray 96 sheets
Paper Tray Capacity*12	Optional	1 Tray Module / 1 Tray Module with Cabinet: 520 sheets x 1-tray 3 Tray Module: 520 sheets x 3-tray
	Max	2,176 sheets [Standard + 3 Tray Module]
Output Tray Capacity*13	[Model-CPS-B] Upper Center: 250 sheets (A4 LEF), Lower Center: 250 sheets (A4 LEF) [Model-CPS-ST] 400 sheets (A4 LEF)*14	400 sheets (A4 LEF) *14
Power Supply	AC220-240 V +/- 10%, 8 A, 50/60 Hz common	
Maximum Power Consumption	1.76 kW (AC220 V +/- 10%), 1.92 kW (AC240 V +/- 10%) Sleep Mode: 0.3 W (AC230 V +/- 10%) Low Power Mode: 43 W (AC230 V +/- 10%) Ready Mode: 66 W (AC230 V +/- 10%)	
	Model-CPS-B:	W 577 x D 659 x H 769 mm W 577 x D 659 x H 775 mm W 577 x D 659 x H 878 mm (when optional 1 Tray Module is installed.) W 587 x D 659 x H 1,126 mm (when optional 1 Tray Module with Cabinet is installed.) W 587 x D 659 x H 1,126 mm (when optional 3 Tray Module is installed.)
Dimensions	Model-CPS-ST:	W 577 x D 659 x H 769 mm W 577 x D 659 x H 872 mm (when optional 1 Tray Module is installed.) W 587 x D 659 x H 1,120 mm (when optional 1 Tray Module with Cabinet is installed.) W 587 x D 659 x H 1,120 mm (when optional 3 Tray Module is installed.)
	Weight*15	60 kg 75 kg (when optional 1 Tray Module is installed.) 81 kg (when optional 1 Tray Module with Cabinet is installed.) 83 kg (when optional 3 Tray Module is installed.)

\*1: Storage Device Capacity is not totally available for customers. \*2: When the optional Storage (SSD) is installed. \*3: It may change depending on usage conditions. \*4: Embedded Plug-ins / Custom Services are enabled as factory default. \*5: Supported standard envelope sizes are Commercial#10, Monarch 7 3/4, DL, ISO-C4, etc. \*6: Supported standard envelope sizes are ISO-C4 and ISO-C5. \*7: Up to A3 size. \*8: It is recommended to use our recommended paper. Correct print output may not be possible depending on the requirement. \*9: A4 LEF / Monochrome priority mode. \*10: A4 LEF / Colour priority mode. \*11: The speed may be reduced due to the image quality adjustment. \*12: 80 gsm paper. \*13: 70 gsm paper. \*14: When installing the optional Exit 2 Tray, the Center Tray capacity is 250 sheets (A4 LEF), and the Exit 2 Tray capacity is 250 sheets (A4 LEF). \*15: Excluding Toner Cartridge.

### Print Function

Item	Description	
Type	Built-in type	
Print Size	Tray 1	Same as the Basic Specifications / Copy Function
	Tray 2, 3, 4	Same as the Basic Specifications / Copy Function
	Bypass Tray	Max: A3, 11 x 17", Min: A5 SEF, Envelope*1, Postcard (100 x 148 mm) Custom Size: 89 x 98 mm to 297 x 1,200 mm*2
Image loss width*3	Lead edge 4.0 mm, Trail edge 2.0 mm, Right / Left edge 2.0 mm	
Continuous Print Speed*4	Same as the Basic Specifications / Copy Function	
Printing Resolution	Standard	[PCL Driver] Standard: 1,200 x 2,400 dpi, High Quality: 1,200 x 2,400 dpi, High Resolution: 1,200 x 1,200 dpi
	Optional	[Adobe® PostScript® 3™ Driver] High Speed (Standard): 600 x 600 dpi, High Quality: 1,200 x 2,400 dpi, High Resolution: 1,200 x 1,200 dpi
Page Description Language	Standard	PCL5 / PCL6
	Optional	Adobe® PostScript® 3™
Supported Operating System*5	Standard	[PCL Driver] Windows 11 (64 bit), Windows 10 (32/64 bit) Windows Server 2022 (64 bit), Windows Server 2019 (64 bit), Windows Server 2016 (64 bit) [Mac OS X Driver] macOS 14 / 13 / 12 / 11 / 10.15
	Optional	[Adobe® PostScript® 3™ Driver] Windows 11 (64 bit), Windows 10 (32/64 bit) Windows Server 2022 (64 bit), Windows Server 2019 (64 bit), Windows Server 2016 (64 bit) macOS 14 / 13 / 12 / 11 / 10.15
Interface	Standard Ethernet 1000BASE-T / 100BASE-TX / 10BASE-T, USB3.0 Optional Wireless LAN (IEEE 802.11a / b / g / n / ac)	

\*1: Supported standard envelope sizes are Commercial#10, Monarch 7 3/4, DL, ISO-C4, etc. \*2: Long paper of 106 to 220 gsm (Extra Heavyweight) is available. The printed papers are delivered to the Side Tray when Finisher-A3 is attached. \*3: Up to A3 size. \*4: The speed may be reduced due to the image quality adjustment. The printing speed may be reduced depending on the document. \*5: Please refer to our official website for the latest supported OS.

### Scan Function

Item	Description
Type	Colour Scanner
Scan Resolution	600 x 600 dpi, 400 x 400 dpi, 300 x 300 dpi, 200 x 200 dpi
Scan Speed	Same as the Scan Speed for the Duplex Automatic Document Feeder
Interface	Standard Ethernet 1000BASE-T / 100BASE-TX / 10BASE-T
	Optional Wireless LAN (IEEE 802.11a / b / g / n / ac)

### Fax Function (Optional)

Item	Description
Original Size	Max: A3, 11 x 17", Long document (Longest 600 mm*1)
Recording Paper Size	Max: A3, 11 x 17"; Min: A5
Transmission Time	2 seconds and more but fewer than 3 seconds*2
Transmission Mode	ITU-T G3
Applicable Lines	Telephone subscriber line, PBX, Fax communication (PSTN), Maximum 3 ports*3 (G3-3 ports)

\*1: When Duplex Automatic Document Feeder is used. \*2: When A4 size document with approximately 700 characters is transmitted in standard image-quality (8 x 3.85 lines/mm) and in high-speed mode (28.8 kbps or faster, JBIG). Only indicates the time for transmitting the image information and does not include the communication control time. The total communication time will vary depending on the contents of the document, the type of machine receiving the fax, and line condition. \*3: No. of FAX lines is up to 3 ports. Port refers to number of channels for FAX.

### Duplex Automatic Document Feeder B1-C

Item	C2561	C2061
Original Size*1 / Paper Weight	Max: A3, 11 x 17"; Min: A6 38 to 128 gsm (In Duplex: 50 to 128 gsm)	
Capacity*2	110 sheets	
Scan Speed*3	Copy (A4 LEF, Simplex)	B/W: 25 ppm Colour: 25 ppm
	Scan	B/W: 55 ppm, Colour: 55 ppm [Standard Document (A4 LEF), 200 dpi, to Folder]

Note: Installed for Model-CPS-ST as standard. \*1: Custom Size is 125 x 85 mm to 297 x 432 mm. \*2: 70 gsm paper. \*3: The scanning speed varies depending on the documents.

### Duplex Automatic Document Feeder B4-PC

Item	C2561	
Original Size*1 / Paper Weight	Max: A3, 11 x 17"; Min: A6 38 to 128 gsm (In Duplex: 50 to 128 gsm)*2	
Capacity*3	130 sheets	
Scan Speed*4	Copy (A4 LEF, Simplex)	B/W: 25 ppm Colour: 25 ppm
	Scan	B/W: 80 ppm, Colour: 80 ppm (1 pass, 2 sided scanning: B/W 80 ppm, Colour 80 ppm) [Standard Document (A4 LEF), 200 dpi, to Folder]

Note: Installed for Model-CPS-B as standard. \*1: Custom Size is 49 x 85 mm to 297 x 432 mm. \*2: Custom Sizes from 49 x 85 mm to 55 x 91 mm are available from 38 to 209 gsm. \*3: 70 gsm paper. \*4: The scanning speed varies depending on the documents.

### Side Tray (Optional)

Item	Description
Paper Capacity*	100 sheets
Dimensions / Weight	W 328 x D 540 x H 198 mm, 3 kg

\* 70 gsm paper.

### Notes

- If the storage media of the base unit fail, loss of received data, accumulated data, registered setting data, etc. may occur. In no event shall "the company" be liable for any damages whatsoever arising from loss of data.
- Functional spare parts will be available for at least 7 years after the product is no longer manufactured.

## Finisher-A3 (Optional)

Item	Description
Type	Center Tray Stack
	Finishing Tray Sort (Offset available*1*2) / Stack (Offset available*1*2)
Paper Size	Center Tray A4, A3
	Finishing Tray Max: A3, 11 x 17"; Min: A6, Postcard (100 x 148 mm) Custom Size: 89 x 98 mm to 297 x 432 mm
Paper Weight	Center Tray 52 to 300 gsm
	Finishing Tray 52 to 256 gsm
Paper Capacity*3	Center Tray A4 LEF: 125 sheets; A4 SEF, A3: 50 sheets
	Finishing Tray [Without Stapling] A4 LEF: 500 sheets; JIS B4: 250 sheets; A3 or larger: 200 sheets; Mixed Size Stacking*4: 250 sheets [With Stapling] A4 LEF: 30 sets or 500 sheets; JIS B4: 250 sheets; A3 or larger: 200 sheets; Mixed Size Stacking*4: 250 sheets
Staple	Capacity A4: 50 sheets (90 gsm or less), JIS B4 or larger: 30 sheets (90 gsm or less)
	Paper Size Max: A3, 11 x 17"; Min: JIS B5 LEF Custom Size: 203 x 182 mm to 297 x 432 mm
	Paper Weight 52 to 256 gsm
Position	Single stapling, Dual stapling
Dimensions / Weight	W 465 x D 484 x H 248 mm, 10 kg

\*1: [No Offset] is selected by factory default. \*2: Outputs less than 190 mm width are delivered without offset stacking. \*3: 70 gsm paper. \*4: When larger size sheets are stacked on top of smaller size sheets: 250 sheets (when large size sheets are smaller than A3) / 200 sheets (when large size sheets are A3 or larger). The same applies to when staple-free and stapled bindings are mixed or different stapling positions are mixed.

## Finisher-B4 / B5 (Optional)

Item	Finisher-B4	Finisher-B5
Type	Center Tray Stack	Center Tray Stack
	Finishing Tray Sort (Offset available*1*2) / Stack (Offset available*1*2)	Finishing Tray Sort (Offset available*1*2) / Stack (Offset available*1*2)
Paper Size*3	Center Tray Max: A3, 11 x 17"; Min: A5; Custom Size: 148 x 148 mm to 297 x 432 mm	Center Tray Max: A3, 11 x 17"; Min: A5; Custom Size: 148 x 148 mm to 297 x 432 mm
	Finishing Tray Max: A3, 11 x 17"; Min: A5; Custom Size: 148 x 148 mm to 297 x 432 mm	Finishing Tray Max: A3, 11 x 17"; Min: A5; Custom Size: 148 x 148 mm to 297 x 432 mm
Paper Weight*4	Center Tray 52 to 300 gsm	Center Tray 52 to 300 gsm
	Finishing Tray 52 to 300 gsm	Finishing Tray 52 to 300 gsm
Paper Capacity*5	Center Tray 200 sheets (80 gsm or less)	Center Tray 200 sheets (80 gsm or less)
	Finishing Tray [Without Stapling] A4: 2,000 sheets, JIS B4 or larger: 1,000 sheets, Mixed Size Stacking*6: 300 sheets	Finishing Tray [With Stapling] A4: 100 sets or 1,000 sheets*7, JIS B4 or larger: 75 sets or 750 sheets [With Booklet Finishing*8] 50 sets or 600 sheets [With Fold*8] 500 sheets
Staple	Capacity 50 sheets (90 gsm or less)	Staple: 50 sheets (90 gsm or less) Staple-free Staple*9*10: 10 sheets (80 gsm or less)
	Paper Size Max: A3, 11 x 17"; Min: A5 LEF Custom Size: 210 x 148 mm to 297 x 432 mm	Paper Size Max: A3, 11 x 17"; Min: A5 LEF Custom Size: 210 x 148 mm to 297 x 432 mm
	Paper Weight 52 to 256 gsm	Staple: 52 to 256 gsm Staple-free Staple*9*10: 64 to 105 gsm
Position	Single stapling, Dual stapling	Single stapling, Dual stapling
	Paper Size*12 Max: A3, 11 x 17"; Min: A5 LEF Custom Size: 210 x 148 mm to 297 x 432 mm	Paper Size*12 Max: A3, 11 x 17"; Min: A5 LEF Custom Size: 210 x 148 mm to 297 x 432 mm
Punch*11	Paper Weight 52 to 220 gsm	Paper Weight 52 to 220 gsm
	Number of Holes 2-hole / 4-hole punch or 2-hole / 3-hole punch (US Specifications)	Number of Holes 2-hole / 4-hole punch or 2-hole / 3-hole punch (US Specifications)
Booklet Finishing*8	Paper Size Max: A3, 11 x 17"; Min: A4, Letter Custom Size: 210 x 279 mm to 297 x 432 mm	Paper Size Max: A3, 11 x 17"; Min: A4, Letter Custom Size: 210 x 279 mm to 297 x 432 mm
	Capacity Saddle Staple: 15 sheets; Single Fold: 5 sheets	Capacity Saddle Staple: 15 sheets; Single Fold: 5 sheets
Paper Weight	Saddle Staple: 64 to 80 gsm*13, Single Fold: 64 to 105 gsm	Saddle Staple: 64 to 80 gsm*13, Single Fold: 64 to 105 gsm
	Dimensions*14*15 W 618 x D 653 x H 1,047 mm With Booklet Maker Unit: W 618 x D 673 x H 1,076 mm	Dimensions*14*15 W 618 x D 653 x H 1,047 mm With Booklet Maker Unit: W 618 x D 673 x H 1,076 mm
Weight	26 kg Punch Module: + 2 kg, Booklet Maker Unit: + 10 kg	28 kg Punch Module: + 2 kg, Booklet Maker Unit: + 10 kg

Note: Finisher-B4 / Finisher-B5 is available only when optional 1 Tray Module with Cabinet or 3 Tray Module is attached to Main Unit. Note: Only stapled stapling is available with Finisher-B4. You cannot add staple-free stapling function. Note: Both stapled stapling and staple-free stapling are available with Finisher-B5. Note: Kit Finisher-B4/B5 INST is required.  
\*1: The offset feature is set to disabled by factory default. \*2: Outputs whose weight is 257 gsm and more or width is less than 210 mm are delivered without offset stacking. \*3: Paper in the sizes larger than A3 or 11 x 17" or smaller than A5 are delivered to the Centre Tray. \*4: Documents may not be printed correctly depending on usage conditions. (52 to 55 gsm, 257 gsm and more) \*5: 70 gsm paper. \*6: When larger size sheets are stacked on top of smaller size sheets. \*7: 75 sets or 750 sheets with dual stapling. \*8: The Booklet Finishing function requires the optional Booklet Maker Unit for Finisher-B. Make a crease allows you to fold easily. After a job with the Booklet Finishing function specified has been output, the next job may not be delivered until the sheets are removed from the output tray. Also, if larger size sheets are stacked on top of smaller size sheets after a job with the Booklet Finishing function specified has been run, the next job may not be delivered until the sheets are removed from the output tray. \*9: Staple-free stapling is available with Finisher-B5. \*10: Staple-free stapling does not have binding force equal to stapled stapling. Bound part may be easily separated depending on the paper, temperature, humidity, and how the page is turned over. \*11: The Punch function requires the optional 2/4 Hole Punch Module for Finisher-B or US 2/3 Hole Punch Module for Finisher-B. \*12: Available number of punch holes varies depending on the paper size. \*13: Covers can be up to 220 gsm (Extra Heavyweight). \*14: Inner connector within the body is excluded. \*15: When the Extension Tray is pulled out.

## Duplex Automatic Document Feeder

B4-PC (1 pass, 2 sided scanning)  
Standard for Model-CPS-B



B1-C  
Standard for Model-CPS-ST



Note: Not available as an option.



Long Paper Inserter

## 1 Tray Model



Standard Scan to /  
Print from USB Memory

## Optional Tray Module

1 Tray Module



1 Tray Module with Cabinet



3 Tray Module



## Finishers



Finisher-A3



Finisher-B5\*  
Supports Staple-free  
Stapling

Booklet Maker Unit for Finisher-B



Finisher-B4\*

2/4 Hole Punch Module for Finisher-B  
2/3 Hole Punch Module for Finisher-B

\* Optional 3 Tray Module or 1 Tray Module  
with Cabinet and KIT Finisher-B4/B5 INST  
are required.



Exit 2 Tray

Standard for Model-CPS-B,  
Optional for Model-CPS-ST

# FUJIFILM

FUJIFILM Business Innovation Singapore Pte. Ltd.

20E Pasir Panjang Road #02-21A Mapletree Business City Singapore 117439

Tel.+65-6766-8888

[fujifilm.com/fbsg](http://fujifilm.com/fbsg)

FUJIFILM Business Innovation aims to address environmental issues through climate change mitigation and resource circulation efforts.

The available model varies depending on the country/region. Please ask the sales representatives for details.

The product specifications, appearance and other details in this brochure are subject to change without notice for improvements.

**Reproduction Prohibitions** Please note that reproduction of the following is prohibited by law : •Domestic and foreign currencies, government-issued securities, and national bonds and local bond certificates. •Unused postage stamps, post cards, etc. •Certificate stamps stipulated by law. •Reproducing works forming the subject matter of copyright (literary works, musical works, paintings, engravings, maps, cinematographic works, drawings, photographic works, etc.) is not permitted unless the reproduction is for the purpose of personal use, family use or other similar uses within a limited circle.

**Trademarks** •FUJIFILM and FUJIFILM logo are registered trademarks or trademarks of FUJIFILM Corporation. •Apeos, DocuWorks, Working Folder, and Cloud Service Hub are registered trademarks or trademarks of FUJIFILM Business Innovation Corp.

•Microsoft, Active Directory, Azure, Microsoft Entra, Microsoft Edge, Excel, OneDrive, PowerPoint, SharePoint, Microsoft Teams, Windows, and Windows Server are registered trademarks of US Microsoft Corporation in the U.S. and other countries. •Apple, Mac, macOS, OS X, AirPrint, and AirPrint logo are trademarks of Apple Inc. registered in the U.S. and other countries and regions. •Adobe, Adobe logo, PostScript, and PostScript logo are either registered trademarks or trademarks of Adobe in the United States and/or other countries. •Mopria, the Mopria Logo, and the Mopria Alliance word mark and logo are registered and/or unregistered trademarks and service marks of Mopria Alliance, Inc. in the United States and other countries. •QR Code is a registered trademark of DENSO WAVE INCORPORATED. •All product names and company names mentioned in this brochure are trademarks or registered trademarks of their respective companies.



### For Your Safety

Before using the product, read the Instruction Manual carefully for proper use. Use the product with the power source and voltage specified. Be sure to establish ground connection. Otherwise, electronic shock may result in the case of a failure or short circuit.